

Архангельск (8182)63-90-72
Астана (7172)727-132
Астрахань (8512)99-46-04
Барнаул (3852)73-04-60
Белгород (4722)40-23-64
Брянск (4832)59-03-52
Владивосток (423)249-28-31
Волгоград (844)278-03-48
Вологда (8172)26-41-59
Воронеж (473)204-51-73
Екатеринбург (343)384-55-89
Иваново (4932)77-34-06

Ижевск (3412)26-03-58
Иркутск (395)279-98-46
Казань (843)206-01-48
Калининград (4012)72-03-81
Калуга (4842)92-23-67
Кемерово (3842)65-04-62
Киров (8332)68-02-04
Краснодар (861)203-40-90
Красноярск (391)204-63-61
Курск (4712)77-13-04
Липецк (4742)52-20-81
Киргизия (996)312-96-26-47

Магнитогорск (3519)55-03-13
Москва (495)268-04-70
Мурманск (8152)59-64-93
Набережные Челны (8552)20-53-41
Нижний Новгород (831)429-08-12
Новокузнецк (3843)20-46-81
Новосибирск (383)227-86-73
Омск (3812)21-46-40
Орел (4862)44-53-42
Оренбург (3532)37-68-04
Пенза (8412)22-31-16
Казахстан (772)734-952-31

Пермь (342)205-81-47
Ростов-на-Дону (863)308-18-15
Рязань (4912)46-61-64
Самара (846)206-03-16
Санкт-Петербург (812)309-46-40
Саратов (845)249-38-78
Севастополь (8692)22-31-93
Симферополь (3652)67-13-56
Смоленск (4812)29-41-54
Сочи (862)225-72-31
Ставрополь (8652)20-65-13
Россия (495)268-04-70

Сургут (3462)77-98-35
Тверь (4822)63-31-35
Томск (3822)98-41-53
Тула (4872)74-02-29
Тюмень (3452)66-21-18
Ульяновск (8422)24-23-59
Уфа (347)229-48-12
Хабаровск (4212)92-98-04
Челябинск (351)202-03-61
Череповец (8202)49-02-64
Ярославль (4852)69-52-93

<https://weidmuller.nt-rt.ru/> || wde@nt-rt.ru

Safe. Robust. Functional.

Klippon® enclosure systems

**KLIPPON®
PROTECT**



Weidmüller 

Klippon® Protect

Proven solutions for your applications

For more than 50 years, the name Klippon® has been synonymous with innovation, competence, and quality in relation to products and services in the automation technology industry.

The flexible Klippon® Protect enclosure system is the perfect addition to our Klippon® Connect range of modular terminal blocks. Rely on our enclosures that are optimised for your requirements and provide excellent protection.

With Klippon® Protect, you can choose from a wide range of universal and application-specific enclosures. The enclosures cover all relevant approvals required for use in industrial or explosive risk zones.



Universal range

Functional – for the highest demands

Whether stainless steel, aluminium or plastic: Klippon® Protect universal enclosures offer outstanding protection for your assemblies. The robust enclosures enable you to realise different applications according to your needs. The matching system accessories enable easy integration, expansion and customisation.

- Outstanding performance even in extreme environmental conditions
- Robust and secure for maximum protection requirements
- Approved based on the latest international quality and safety standards



Klippon® Services

Our service connects – worldwide

Our Klippon® Services combine consultancy, planning, application expertise and industry know-how to create a tailor-made solution. The Fast Delivery Services also guarantee offers within minutes, including article numbers that can be ordered directly – 24 hours a day, 7 days a week.

Application range

At home in your markets

Klippon® Protect offers a wide range of solutions for standard industrial applications and applications in explosive environments across industrial sectors. Our application range includes solutions for monitoring and safety, measurement and control technology, and power distribution.

- Consistent enclosure design for a wide range of applications
- Various standard solutions for maximum safety, reliable functionality and low follow-up costs
- Certified for explosive risk zones and standard industrial applications



Your advantages at a glance



Corrosion resistance

Corrosion-resistant materials and surfaces make our enclosures particularly safe and durable.



Variety of accessories

A wide range of additional components is available for various purposes and applications.



Easy to install

Benefit from the wide range of installation options. Customised for your application.



Configurable

Use the Weidmüller Configurator to configure your components quickly and easily.



Temperature resistance

Optimal sealing properties allow for use in extreme temperature ranges from -60°C to +135°C – depending on the application.



IP protection

Depending on the design, our Klippon® Protect enclosures guarantee IP protection of up to IP66/IP67/IP68.



EMC protection

Most of our enclosures already have a high level of EMC protection as standard.



Vibration resistance

Vibration-resistant and shock-resistant products, tested in our accredited laboratory.

Benefit from innovative automation concepts as a success factor

Klippon® Protect for better performance and more efficient processes

Klippon® products and services are optimally adapted to the requirements of modern automation concepts. They combine the highest quality with excellent flexibility and performance – and thus become an integral part of your automation solutions. In the versatile Klippon® product portfolio you will find everything you need to optimise your production facilities. The choice is yours.

Klippon® K

Robust aluminium enclosure for industrial applications.

- Corrosion-resistant materials and surfaces
- High impact resistance
- Robust and durable



Cabtite

Flexible and safe insertion of prefabricated cables.

- High IP and NEMA protection
- Integrated strain relief based on DIN EN 62444
- Modular design allows individual prefabrication



Klippon® EBi

Stainless steel enclosure providing perfect protection in industrial applications.

- Protection class IP66 or NEMA 4x
- Impact resistance according to IK09
- Flexible installation of mounting rails or mounting plates



Increase efficiency and reliability in transportation

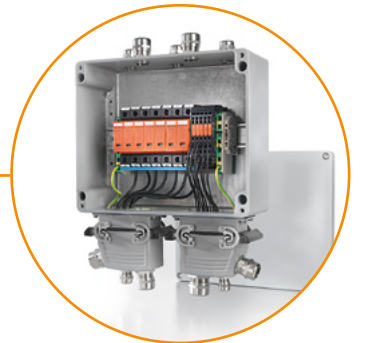
Klippon® Protect enclosure solutions for the mobility of the future

With secure connection solutions and tailor-made, individually configurable components, we are making a decisive contribution to the transport of the future. Our solutions are certified to the latest industry standards. They are produced using state-of-the-art manufacturing methods and stand for quality, durability and reliability.

Klippon® K

The enclosure series is resistant to external influences and therefore ideally suited for applications in the railway infrastructure.

- High IP protection from IP66 up to IP68
- Highly functional cable gland, even for corrosive atmospheres
- Excellent temperature, shock and vibration resistance



Klippon® STB

The stainless steel and sheet steel enclosure series for both industrial applications and harsh environments.

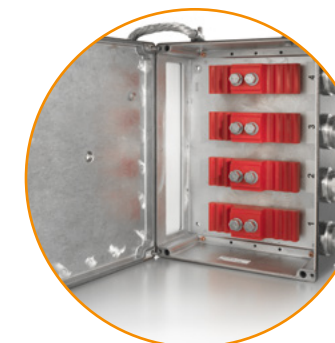
- Extreme stability and corrosion resistance
- Temperature range from -60°C to +120°C
- Flexible internal installation options



High-current terminal solutions

Efficient and reliable power distribution in demanding environments.

- Particularly high EMC protection
- Vibration and shock-resistant
- Resistant to climatic influences



Comply with international standards in the energy supply sector

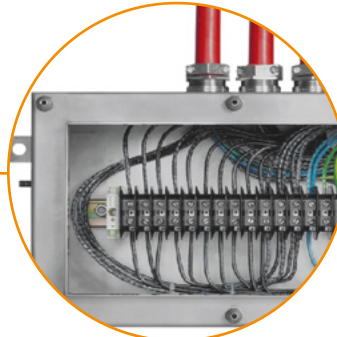
Efficient and safe solutions with Klippon® Protect

With our complete solutions for all types of energy generation and supply, we can help you to guarantee the safe and reliable operation of your systems while also ensuring maximum availability. We provide you with the right Klippon® products for industrial solutions, harsh environments, explosive risk zones and safety-relevant applications – naturally with all of the market-specific certifications and approvals.

Customer-specific solutions

Our extensive customer consulting, powerful project management, and flexible production enable individual, customised solutions.

- Modified products for industry-specific requirements
- International approvals and certifications
- Compliance with explosion protection directives



Klippon® POK

Glass fibre-reinforced polyester enclosures for standard industrial applications and use in explosive risk zones.

- High IP protection up to IP66
- Corrosion resistant and highly impact resistant
- International standards guarantee maximum safety



Robust plastic enclosures

Klippon® plastic enclosures are extremely weather-resistant and ideally suited for outdoor use.

- Insensitive to vibration, shock and climatic influences
- Excellent for use in photovoltaics
- Cable glands as accessories for a wide range of applications

Safely control work processes in hazardous areas on site

Certified Klippon® Protect control and display elements

Klippon® Protect control and display elements support all areas of automation within the process industry. Rely on innovative technologies and active safety concepts with our products. They ensure secure connections between the interfaces for different areas and guarantee safe, effective and sustainable operation within the processes.

Klippon® Services

Benefit from optimal support so you can focus on your core business.

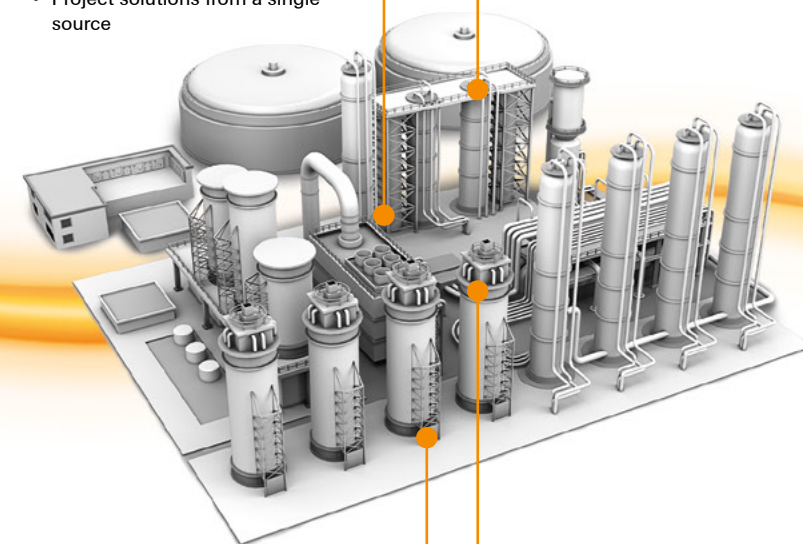
- Consulting and engineering for your application
- Certified products according to the latest local and international standards
- Fast, quality-oriented production and product availability



Klippon® Control Station

Control work processes safely on site. With certified enclosure solutions for demanding environments.

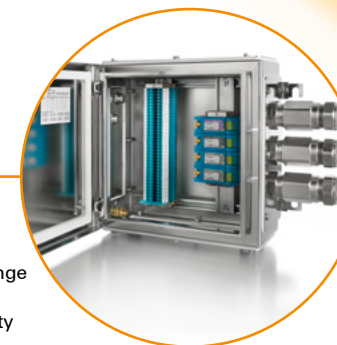
- Various sizes and materials
- Standard variant from stock or customer-specific assembly
- Project solutions from a single source



Klippon® TB

Stainless steel enclosure for use in explosive risk zones.

- Operating temperature range from -60°C up to +135°C
- Protection against humidity and dust up to IP66/IP67
- Convenient, independent engineering with the Weidmüller Configurator



Klippon® Control Station

The Klippon® Control Station combines various control devices and status displays with different electronic components

- Ready-to-use plug-and-play solutions
- Comprehensive approvals for explosive risk zones
- Optimal support for automation in the process industry



Weidmüller – Your partner in Industrial Connectivity

As experienced experts we support our customers and partners around the world with products, solutions and services in the industrial environment of power, signal and data. We are at home in their industries and markets and know the technological challenges of tomorrow. We are therefore continuously developing innovative, sustainable and useful solutions for their individual needs. Together we set standards in Industrial Connectivity.

Архангельск (8182)63-90-72
Астана (7172)727-132
Астрахань (8512)99-46-04
Барнаул (3852)73-04-60
Белгород (4722)40-23-64
Брянск (4832)59-03-52
Владивосток (423)249-28-31
Волгоград (844)278-03-48
Вологда (8172)26-41-59
Воронеж (473)204-51-73
Екатеринбург (343)384-55-89
Иваново (4932)77-34-06

Ижевск (3412)26-03-58
Иркутск (395)279-98-46
Казань (843)206-01-48
Калининград (4012)72-03-81
Калуга (4842)92-23-67
Кемерово (3842)65-04-62
Киров (8332)68-02-04
Краснодар (861)203-40-90
Красноярск (391)204-63-61
Курск (4712)77-13-04
Липецк (4742)52-20-81
Киргизия (996)312-96-26-47

Магнитогорск (3519)55-03-13
Москва (495)268-04-70
Мурманск (8152)59-64-93
Набережные Челны (8552)20-53-41
Нижний Новгород (831)429-08-12
Новокузнецк (3843)20-46-81
Новосибирск (383)227-86-73
Омск (3812)21-46-40
Орел (4862)44-53-42
Оренбург (3532)37-68-04
Пенза (8412)22-31-16
Казахстан (772)734-952-31

Пермь (342)205-81-47
Ростов-на-Дону (863)308-18-15
Рязань (4912)46-61-64
Самара (846)206-03-16
Санкт-Петербург (812)309-46-40
Саратов (845)249-38-78
Севастополь (8692)22-31-93
Симферополь (3652)67-13-56
Смоленск (4812)29-41-54
Сочи (862)225-72-31
Ставрополь (8652)20-65-13
Россия (495)268-04-70

Сургут (3462)77-98-35
Тверь (4822)63-31-35
Томск (3822)98-41-53
Тула (4872)74-02-29
Тюмень (3452)66-21-18
Ульяновск (8422)24-23-59
Уфа (347)229-48-12
Хабаровск (4212)92-98-04
Челябинск (351)202-03-61
Череповец (8202)49-02-64
Ярославль (4852)69-52-93

<https://weidmuller.nt-rt.ru/> || wde@nt-rt.ru